

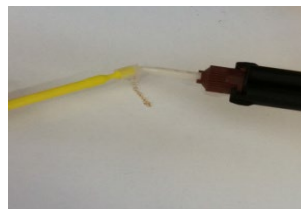
Composite and Chain

US Patent # 8,403, 663

INDICATIONS FOR USE: This product is intended for use by a dental professional for extrusion of an impacted tooth.

Important Note: If using the original C&C attachments, sterilize the brush handle via autoclave prior to use to prevent contamination risk.

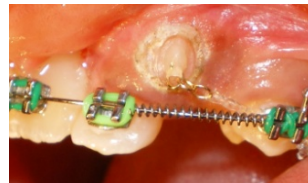
INSTRUCTIONS FOR USE:



1. Prophyl the enamel surface. Rinse and dry. Acid etch the enamel for 30 seconds, Rinse and dry.

2. Apply one coat of Assure® Plus. Lightly air dry.

3. Fill the mold to the top edge with paste ensuring the chain is covered. Do not overfill



4. Quickly place the loaded form on the conditioned, exposed tooth surface.

5. Light cure per manufacturer instructions. Gently remove mold from polymerized composite.

6. Surgically close the site, as necessary, attaching the gold chain to the appropriate tooth or archwire.

⚠ Irritant. Bulk Gold Chain is Non-Hazardous and Nickel-Free.

TO REORDER: REF# DCCP: Disposable C&C Pad Attachment w/Extrusion Chain REF# DCCO: Disposable C&C Oval Attachment w/Extrusion Chain REF# CCO - C&C Original Oval Attachment REF# CCP – C&C Original Pad Attachment, REF# BH – Brush Handle for use with original C&C Oval and Pad Attachments.

WARRANTY: Reliance Orthodontic Products, Inc. recognizes its responsibility to replace products if proven to be defective. Reliance Orthodontic Products, Inc. does not accept liability for any damages or loss, direct or consequential, stemming from the use of or inability to use the products as described. Before using, it is the responsibility of the user to determine the suitability of the product for its intended use. The user assumes all risk and liability in connections therewith.

Rx Only: U.S. Federal law restricts this device to sale by or on the order of a dental professional.



Reliance Orthodontic Products, Inc.

1540 West Thorndale Ave., Itasca, IL 60143 U.S.A.
1-800-323-4348 - www.RelianceOrthodontics.com

Made in the USA



EC

REP

EMERGO EUROPE
Prinsessegracht 20
2514 AP The Hague
The Netherlands

Check out our new learning
platform Reliance U!
www.RelianceU.tech

Australian Sponsor: Emergo
Australia
201 Sussex St. Darling Park
Tower II, Level 20,
Sydney, NSW 2000 Australia

MD



Scan for more information